

Welcome to



25-28.3.2016. Beograd

BULLETIN no.2



Оријентиринг савез Србије
Serbian Orienteering federation



Organizer: Sport Club "AOK Kosutnjak", Beograd
Main organizer: Avramović Dejan, mobile phone number: +381601325048
Date: **25-28.3.2016.**

Event type: Individual multiday orienteering event

Program:

Friday 25.3.

12:00 - Event center is open
14:00 - Beograd Open Easter stage 1 - sprint distance.

Saturday 26.3.

10:00 - Event center is open, finish area Šumarak.
12:00 - Beograd Open Weekend Cup stage 2 - middle distance.

Sunday 27.3.

9:30 - Event center is open, Hotel "Country Club Babe".
11:00 - Beograd Open Weekend Cup stage 3 - long distance.
14:30 - Beograd Open Weekend prize giving ceremony

Monday 28.3.

9:00 - Event center is open, Hotel "Country Club Babe".
10:00 - Beograd Open Easter stage 4 – middle distance
12:30 - Beograd Open Easter 2016 prizes giving ceremony

Entry fees: Low cost entry deadline just expired, but you can make the entries until 22.3. but with higher prices.

Details of the payment:

Name of account holder: AOC Kosutnjak, Beograd
Bank name: Banca Intesa
Bank seat: Milentija Popovica 7b, 11000 Beograd
Bank account No.: 00-508-0003688.4
IBAN: RS35160005080003688441
SWIFT/BIC: DBDBRSBG

or in cash upon arrival at EC.

Time keeping: SI System will be used for time keeping.

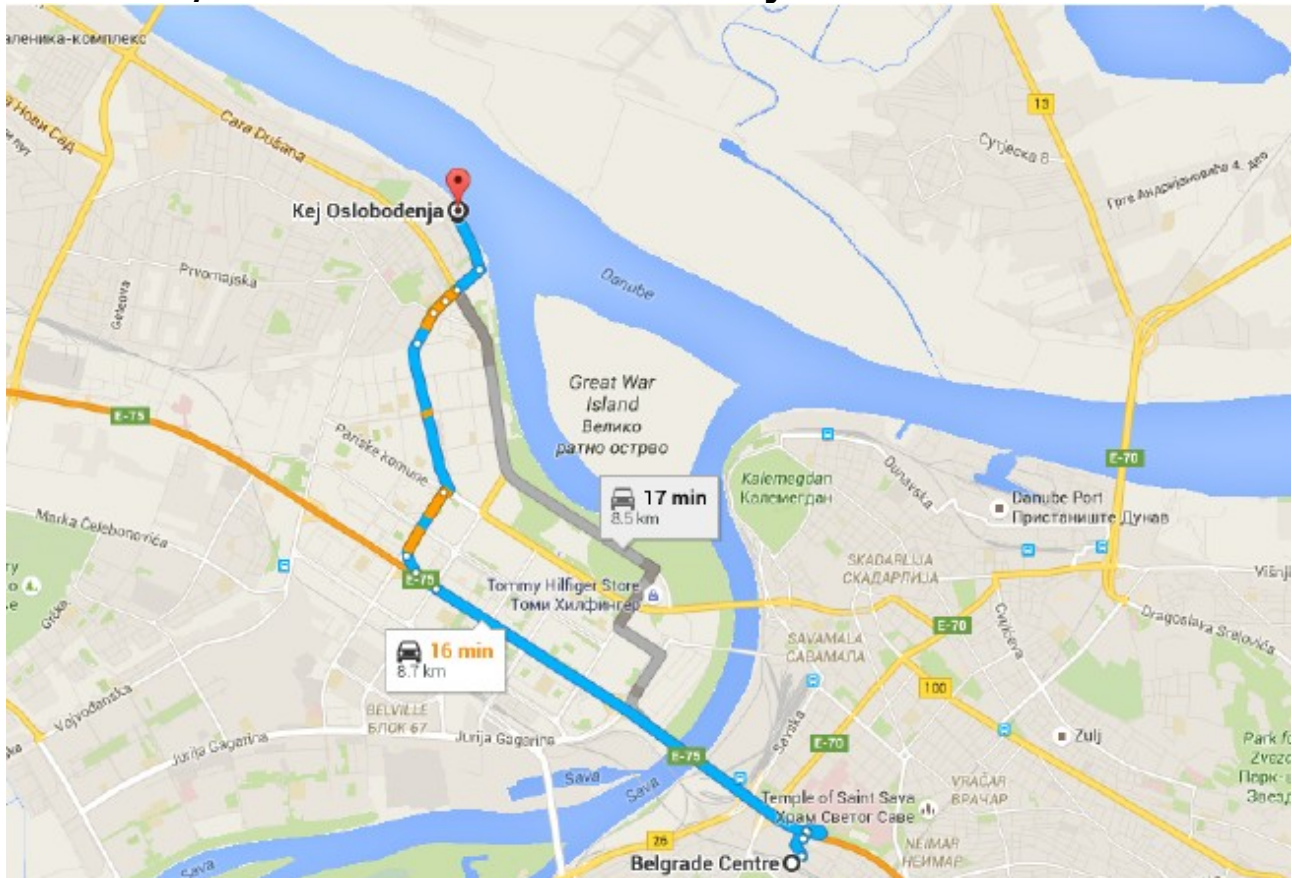
Prizes: For Beograd Open Easter organizers will provided medals for first three athletes in each class.
Divided competition Beograd Open Weekend Cup and other prizes for winners in MW21E.

Note: Organizer will be provided basicly medical help at finish area.
Competitors take a part of their own responsibility and competitors take a part in their own risk.

Open categories: All Open categories (Easy, Medium and Advance) in both events are direct categories. They have divided passage through the start boxes and competitors entered in that categories are free to start as they wish.

25.3.2016. - Beograd Open stage 1, sprint distance

Finish area / Event Center: Restaurant "Venecija"



- ⤴ Parking lot GPS coordinates: **44°50'47.24"N 20°24'55.76"E**
- ⤴ Distance from finish to start: 1100 meters. Route will be clearly marked by color tapes. Competitors can leave their own staff at the finish area.

Start:

- ⤴ 14:00 – "0" start.
- ⤴ Start-time interval: 1 minutes
- ⤴ Start area would consist two boxes:
- ⤴ 1st start box – (-2 minutes). Checking competitors, clear/check SI card
- ⤴ 2nd start box – (-1 minutes)
- ⤴ Start box – start point (triangle on a map): 100 m. The route to start point will be clearly marked.

Map info:

- ⤴ All maps will be in plastic bags and water-protected
- ⤴ Map scale: 1:4.000, e=2,5 m.
- ⤴ Format: A4 Landscape
- ⤴ Maps are drawn according to ISSOM standard.
- ⤴ **There will be no any control description even on a map. Courses will be printed according to the sample on the bottom: Control circle with a dot and control number/control code**



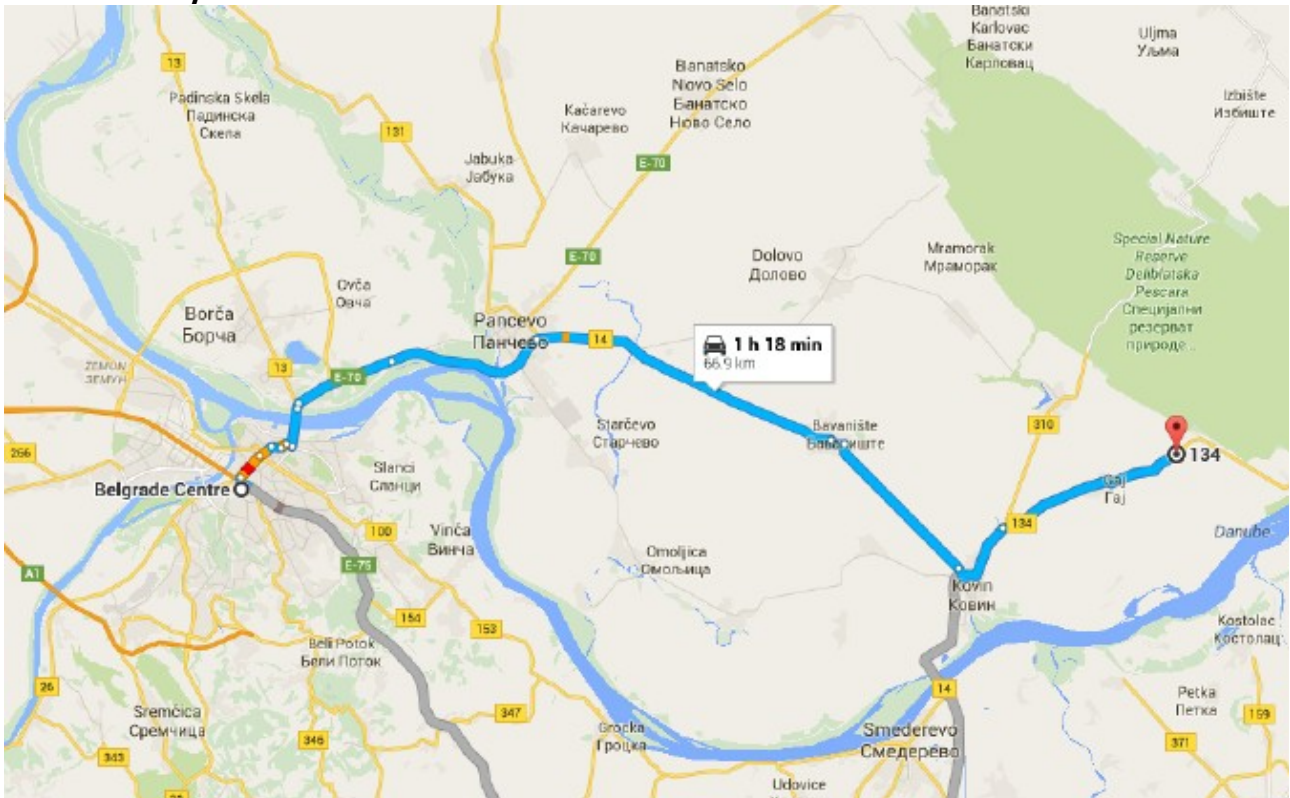
Refreshment:

- ⤴ There will be a refreshment points at finish area.

Course setters: Sava Lazić

26.3.2016. - Beograd open stage 2 – Middle

Finish area / Event Center: Šumarak - finish area



- ⤴ Location is 67 km far from Belgrade towards Bela Crkva, via Pančevo and Kovin
- ⤴ Parking lot GPS coordinates: **44°48'40.91"N, 21°07'27.62"E**
- ⤴ Registration: 10:00 – 11:30.
- ⤴ Organizer will provide a mobile toilets for athletes.
- ⤴ No water or any other refreshment on a courses. Refreshment will be at finish area.

Start:

- ⤴ Distance finish to start – 2600 metara. Note: Large portion of way to start should follow along asphalt road. Be careful.
- ⤴ 12:00 – "0" start.
- ⤴ Start-time interval: 2 minute
- ⤴ Start corridor will consist 2 boxes:
- ⤴ 1st start box – (-2 minutes). Checking competitors, clear/check SI card

- ⤴ 2nd start box – (-1 minutes). Preparing for start.
- ⤴ A competitor is invited to come in first box when start timer shows his-her start time.
- ⤴ Start box – start point (triangle on a map): 70 m. The route to start point will be clearly marked.

Map info:

- ⤴ All maps will be in plastic bags and water-protected.
- ⤴ Map scale: 1:7.5000, e=2,5 m
- ⤴ Maps are drawn according to ISOM standard.
- ⤴ Controle descriptions will be printed on a map for each categories.
- ⤴ Additional controls description would picking up at Event Center.

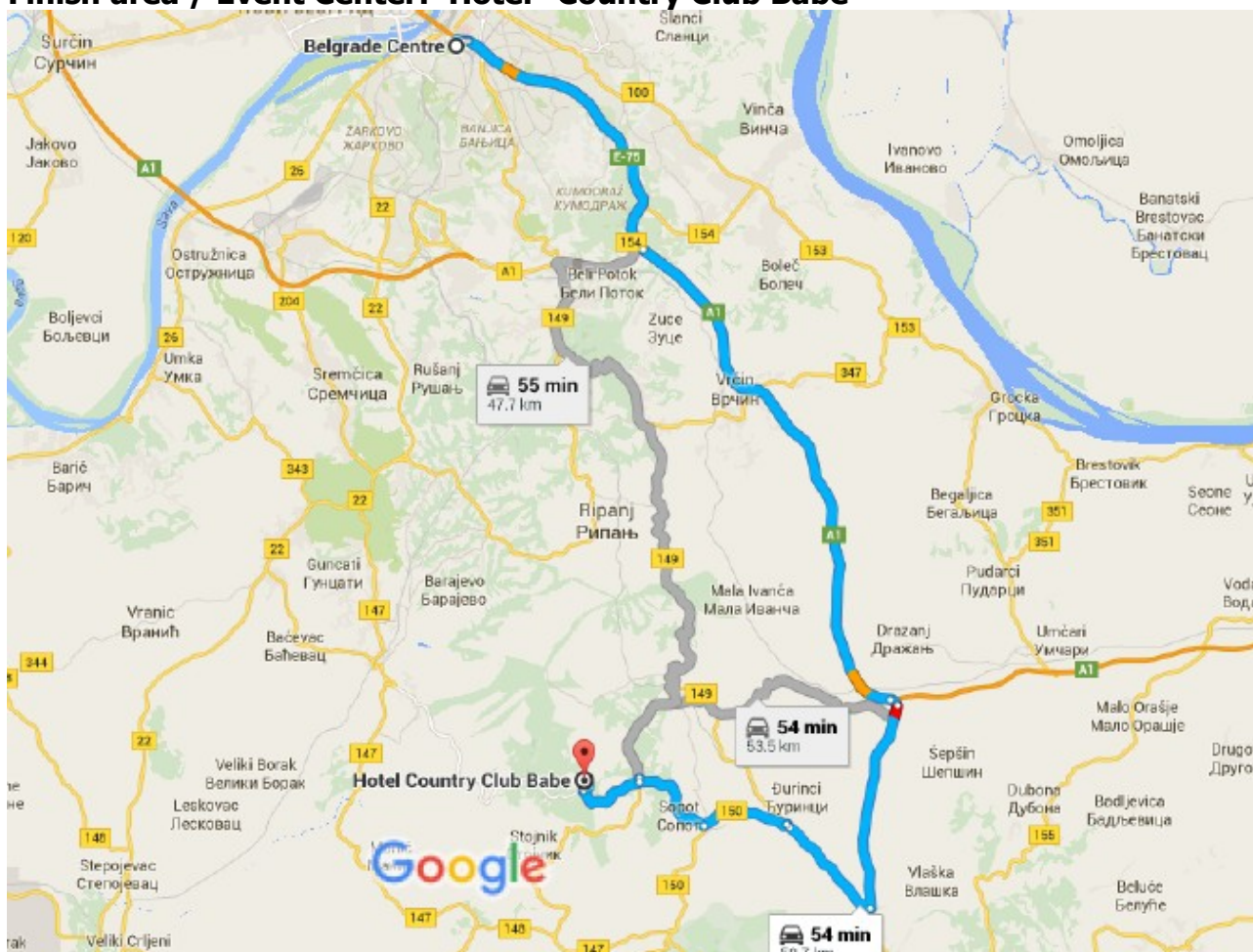
Course setters: Dejan Avramović

Course length's:

Classes	Km
M12 W12, Open Easy	2,06 km / 8 cp
M14 W14, Open Medium	2,21 km / 9 cp
W16, Open Advance	3,99 km / 12 cp
M16	4,50 km / 13 cp
W20 W35 W21 Long	4,83 km / 14 cp
M20 M35 M21 Long	5,58 km / 17 cp
W21E	5,42 km / 16 cp
M21E	7,24 km / 19 cp
W40 W45 W21B Short	3,93 km / 13 cp
M40 M45 M21B Short	4,75 km / 13 cp
W50 W55	3,50 km / 14 cp
M50 M55	3,80 km / 14 cp
W60 W65	2,95 km / 13 cp
M60 M65	3,32 km / 13 cp

27.3.2016. - Beograd open stage 3 – Middle

Finish area / Event Center: Hotel "Country Club Babe"



- ⤴ Hotel parking lot GPS coordinates: **44°32'14.15"N 20°31'0.68"E**
- ⤴ Toilets in the hotel are available. Walking into a hotel with spike shoes is strictly forbidden.

Start:

- ⤴ Distance from EC to Start – 1000 m
- ⤴ Distance from Finish to "Read Out" station – 350 m
- ⤴ 11:00 – "0" start.
- ⤴ Start-time interval: 2 minute
- ⤴ Start corridor will consist two boxes:
- ⤴ 1st start box – (-2 minutes). Checking competitors, clear/check SI card
- ⤴ 2nd start box – (-2 minutes)
- ⤴ Start box – start point (triangle on a map): 90 m. The route to start point will be clearly marked.

Map info:

- ⤴ All maps will be in plastic bags and water-protected
- ⤴ Scale: 1:10.000, e=5 m for all the categories
- ⤴ Maps are drawn according to ISOM standard.
- ⤴ Control description printed on a map for each class. Additional control description can be taken at Event center.

Refreshment:

- ⤴ There will be a refreshment point at Event center.

Course setters: Dejan Avramović

Course's length's:

Classes	Km – con.pt
M12 W12 Open Easy	2,05 km / 7 cp
M14 W14 Open Medium	2,21 km / 9 cp
W16 Open Advance	3,16 km / 14 cp
M16	4,18 km / 18 cp
W20 W35 W21 Long	3,98 km / 17 cp
M20 M35 M21 Long	5,18 km / 20 cp
W21E	4,46 km / 18 cp
M21E	6,08 km / 24 cp
W40 W45 W21B Short	3,40 km / 16 cp
M40 M45 M21B Short	4,33 km / 18 cp
W50 W55	2,98 km / 13 cp
M50 M55	3,94 km / 16 cp
W60 W65	2,68 km / 11 cp
M60 M65	3,06 km / 12 cp

28.3.2016. - Beograd Open stage 4 - long

Finish area / Event Center: Hotel "Country Club Babe"

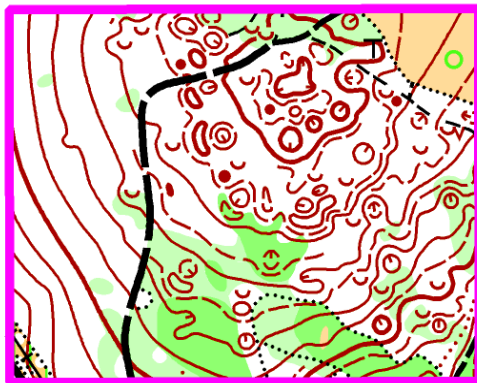
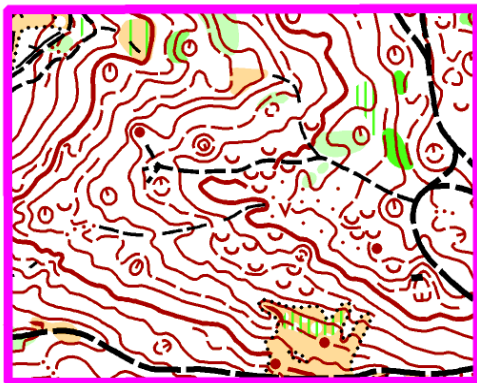
- ⤴ Hotel parking lot GPS coordinates: **44°32'14.15"N 20°31'0.68"E**
- ⤴ Toilets in the hotel are available. Walking into a hotel with spike shoes is strictly forbidden.

Start:

- ⤴ Distance from finish to start: 2200 meters. Route will be clearly marked by color tapes.
- ⤴ 10:00 – "0" start.
- ⤴ Start-time interval: 3 minutes
- ⤴ Start box – start point (triangle on a map): 50 m. The route to start point will be clearly marked.

Map info:

- ⤴ All maps will be in plastic bags and water-protected
- ⤴ Scale: 1:10.000, e=5 m for all the categories
- ⤴ Maps are drawn according to ISOM standard.
- ⤴ Control description printed on a map for each class. Additional control description can be taken at Event center.



Refreshment:

- ⤴ There will be a one refreshment points at terrain for all categories.
- ⤴ There will be a one refreshment points at finish area.

Course setters: Sava Lazić

Course's length's:

Classes	Km - con.pt
M12 W12 Open Easy	1,91 km / 8 cp
M14 W14 Open Medium	2,66 km / 10 cp
W16 Open Advance	3,73 km / 10 cp
M16	5,08 km / 11 cp
W20 W35 W21 Long	6,06 km / 15 cp
M20 M35 M21 Long	7,82 km / 16 cp
W21E	8,07 km / 17 cp
M21E	10,59 km / 26 cp
W40 W45 W21B Short	4,74 km / 11 cp
M40 M45 M21B Short	5,50 km / 12 cp
W50 W55	3,83 km / 11 cp
M50 M55	5,00 km / 13 cp
W60 W65	3,17 km / 11 cp
M60 M65	4,50 km / 13 cp